

FREEHOLD



House - Semi-Detached

EXTENDED FAMILY HOME WITH LOFT CONVERSION

Offers In Excess Of

£650,000

FEATURES

- Four Bedrooms (3 of which are doubles)
- Large Rear Extension with Conservatory
- Loft extension with en-suite
- Extended Semi-Detached Family Home
- Office/study/utility room
- Air conditioning



SPACE
RESIDENTIAL

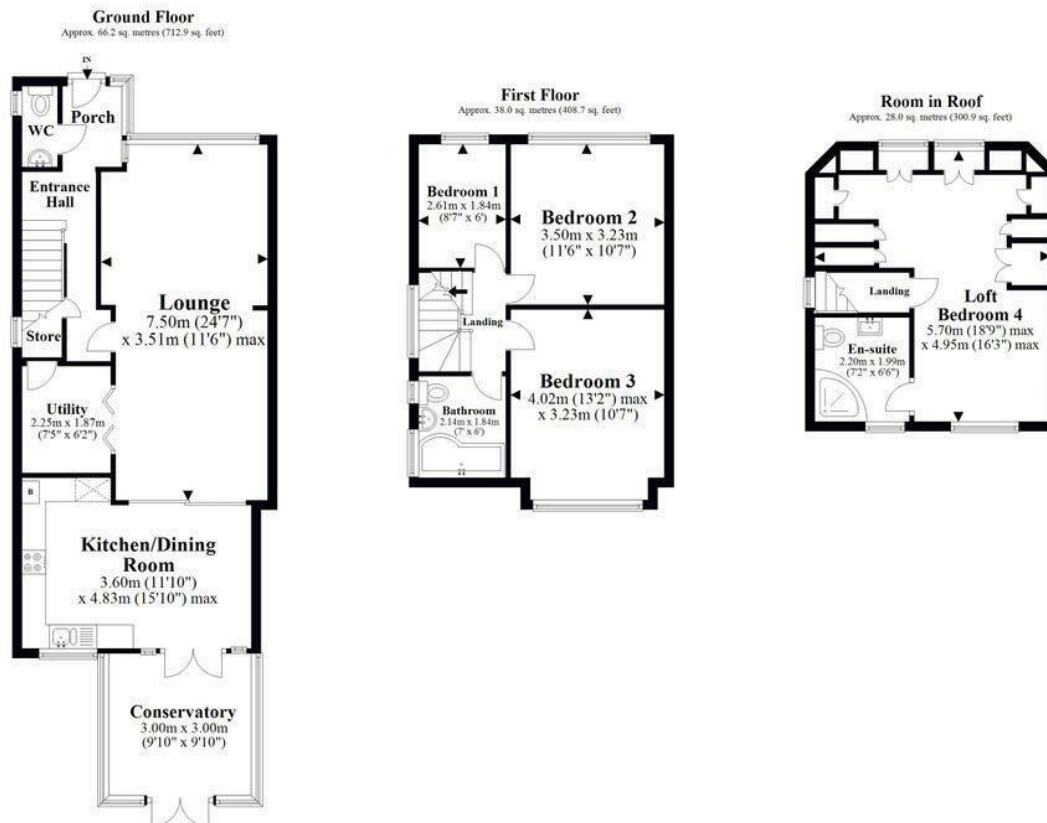
4 Bedroom House - Semi-Detached located in Edgware

Space Residential are delighted to present this fabulous and well presented extended four-bedroom semi-detached family home situated in a highly sought-after quiet location.

Offering generous living accommodation throughout across 3 floors; the property benefits from a rear extension, a conservatory and a loft conversion; creating a versatile family home with excellent space for modern living.

The ground floor comprises a spacious through lounge, an office/study/utility room, and a large separate kitchen and conservatory with direct access to the private rear garden.

To the first floor are three bedrooms (2 doubles and a single) and a family bathroom, whilst the loft conversion provides a substantial fourth bedroom with an en-suite shower room.



Total area: approx. 132.2 sq. metres (1422.5 sq. feet)

All images used are for illustrative purposes only. Floor plans are intended to give a general indication of the proposed layout only. All images and dimensions are not intended to form part of any contract or warranty. Plan produced using PlanIt3D.

Riverdene, Edgware, HA8 9TD

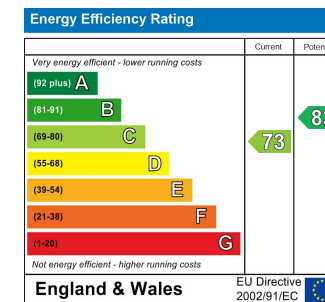
Call us on

0208 906 2222

info@spaceresidential.com
spaceresidential.com

Council Tax Band

D



Agents Note: Whilst every care has been taken to prepare these particulars, they are for guidance purposes only. All measurements are approximate and are for general guidance purposes only and whilst every care has been taken to ensure their accuracy, they should not be relied upon and potential buyers are advised to recheck the measurements.

